

SRS TOP XL-E

This roller shutter, with profile H30 or H38, is foreseen for large areas and special applications and can be integrated with a motor for the winding.

The motor is available in its standard version or with radio frequencies, different capacities, great features, low consumptions, small dimensions, available 12 -24 or 230V, depending on the model and requested features.

Similar to the rolling system of the TOP and TOP XL models, it has 2 different types of closing parts, without key lock. The closing ends can be loaded, in order to have an easier closing. It can be silver anodized or RAL 7035 painted, on demand a range of other RAL colours is available.

This solution is an innovation in the commercial, industrial and special vehicles field.

USEFUL AREA

Max. recommended area	7 m ²
Width max.	3,0 m
Height max.	2,8 m
Width min.	1,0 m

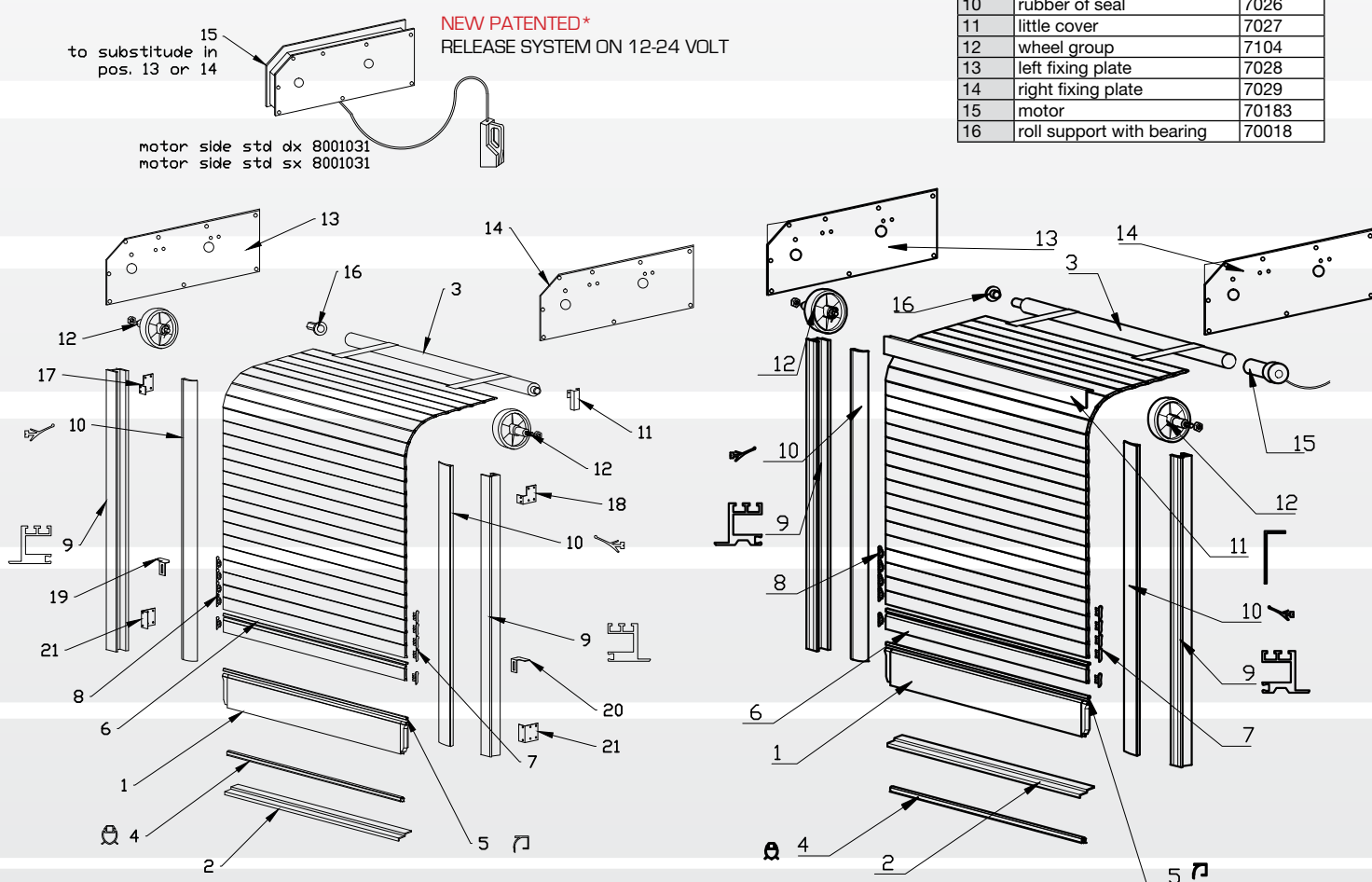
The roller shutter will be delivered divided into parts, which can be easy assembled:

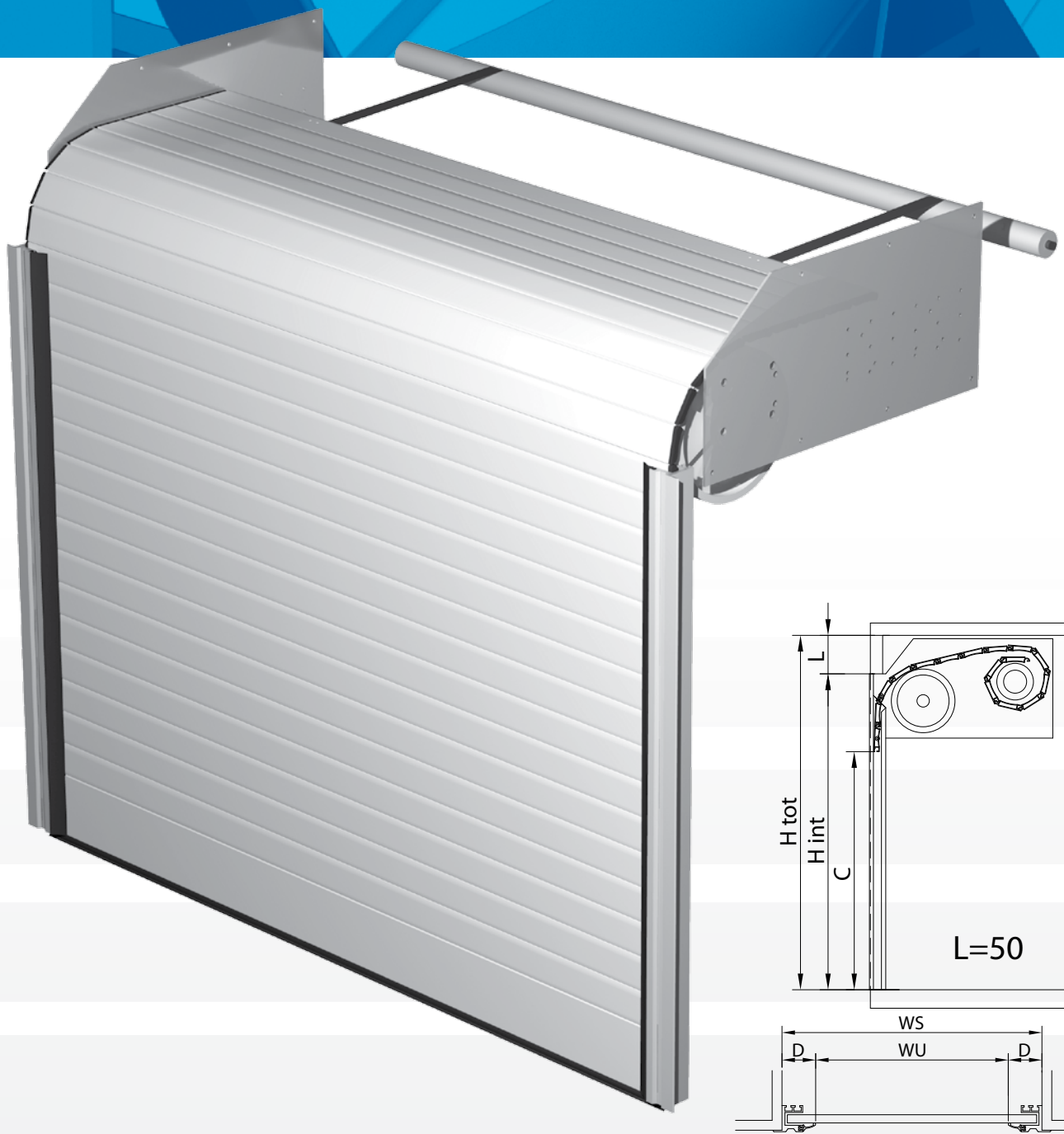
- 1 pre-assembled shutter complete with closing end without locks
- 1 pair of vertical guides
- 1 box with accessories
- 1 winding roll
- 1 box with one motor, all the necessary accessories and mounting instructions for the motor

+ required optionals

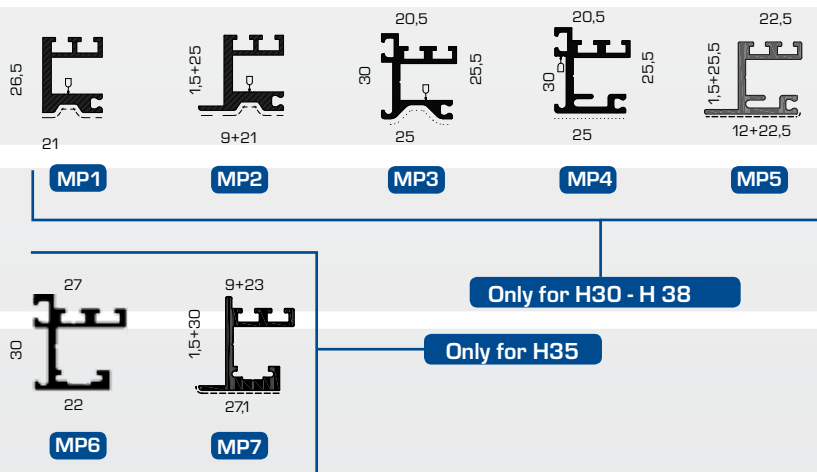
EXPLODED VIEW

Pos.	Description	Code
1	end side	70140.01
2	profile of leaf	70140.00
3	rolls group with supports	70140.03
4	little rubber of leaf	7007
5	middle rubber	7023
6	roller shutter profile	7024
7	right sliding block	7010
8	left sliding block	7025
9	side guide	7003
10	rubber of seal	7026
11	little cover	7027
12	wheel group	7104
13	left fixing plate	7028
14	right fixing plate	7029
15	motor	70183
16	roll support with bearing	70018

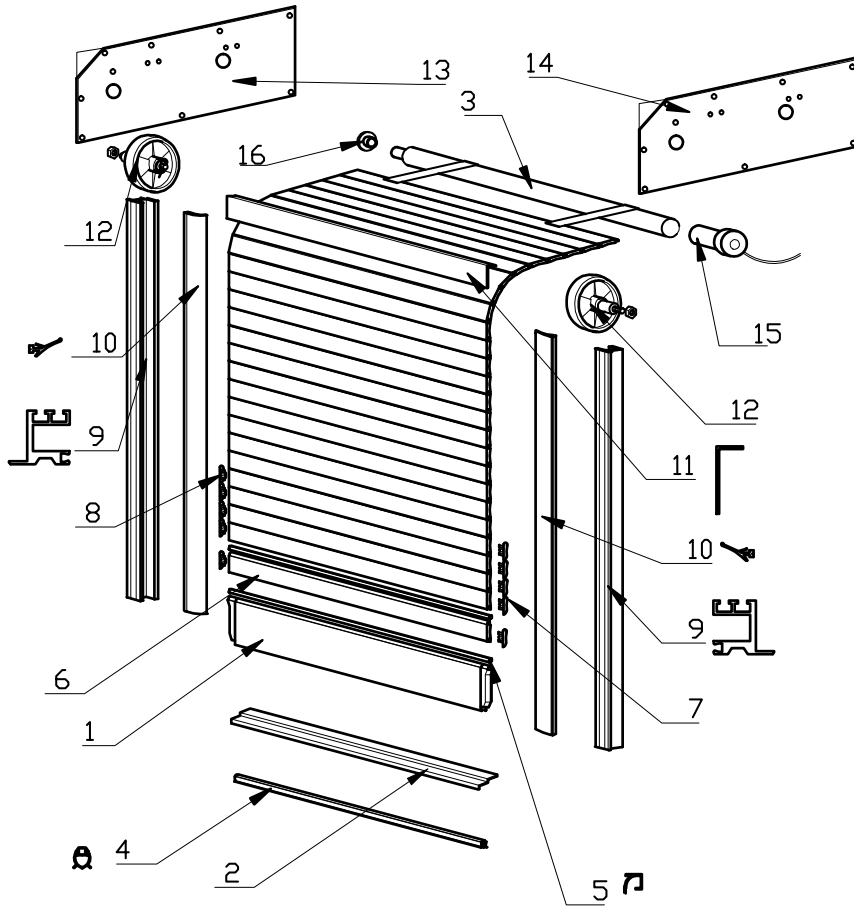




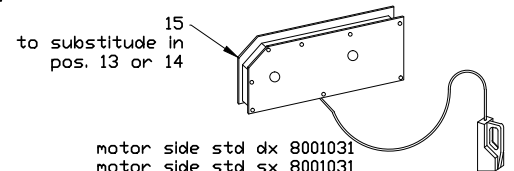
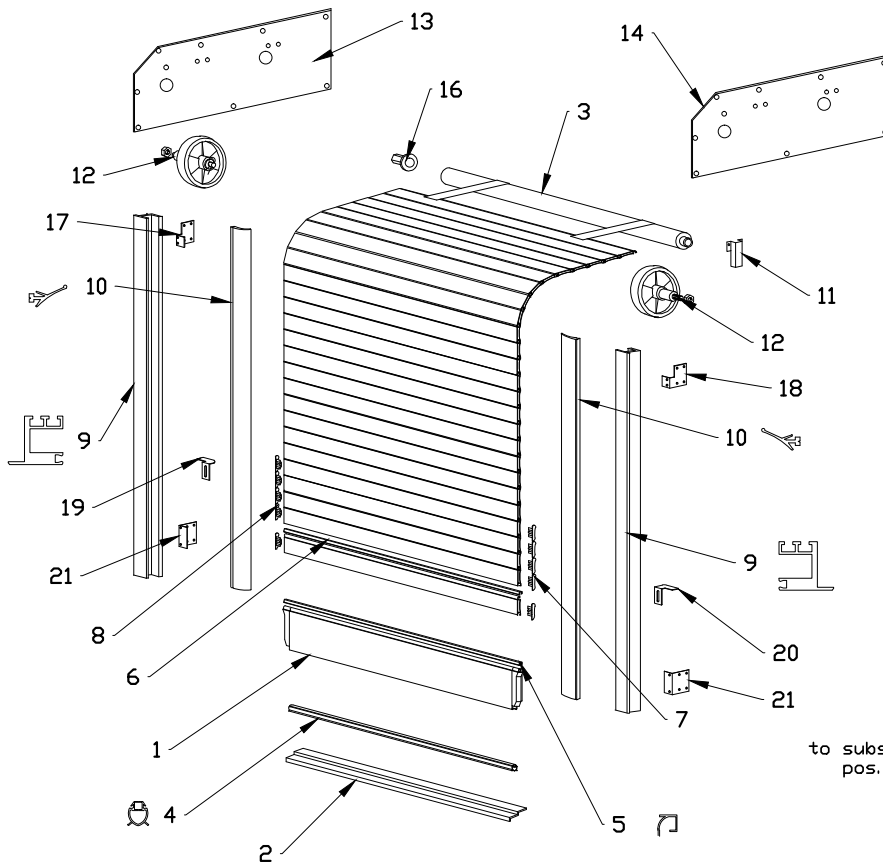
AVAILABLE MOUNTING PROFILES

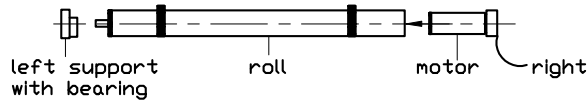
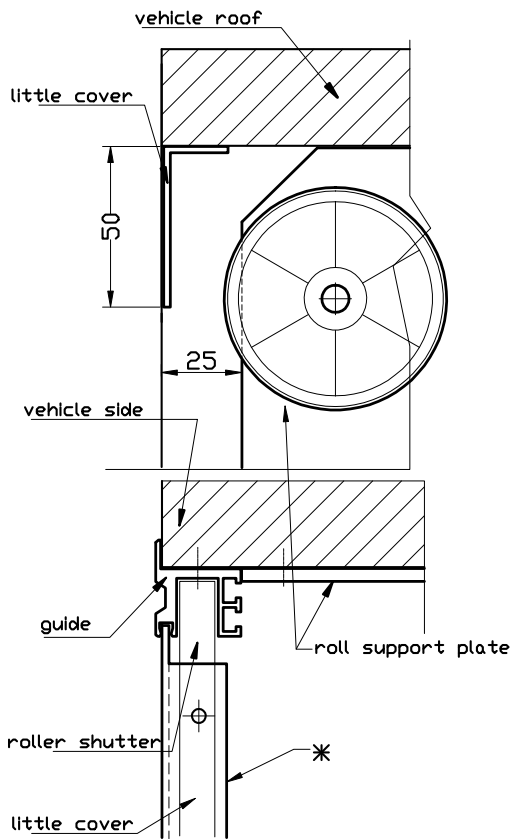


MEASUREMENTS	
H_{tot}	Total height
H_{int}	Internal height
L	Sliding room
C	Light height
WU	Light width
WS	Total width
D	Guide and gasket edge



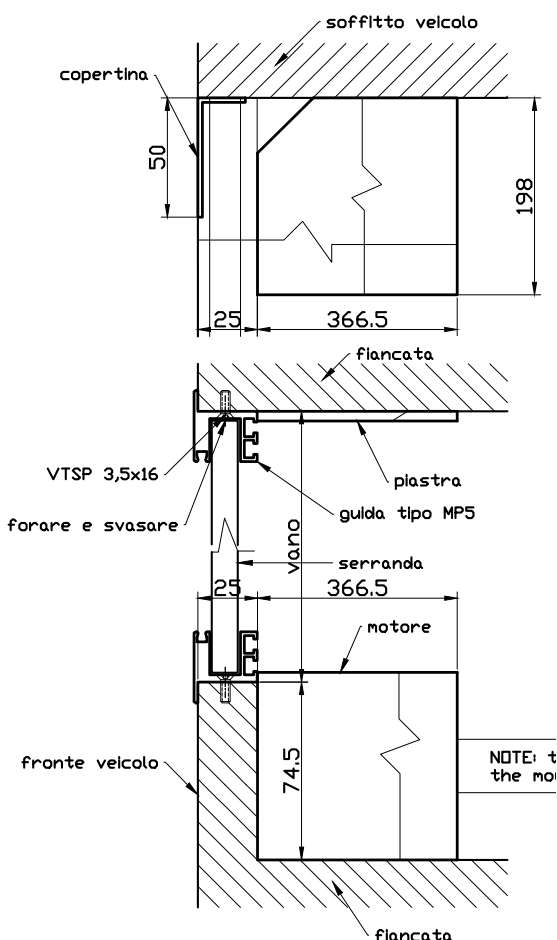
Pos.	Description	Code
1	closing end (that can be loaded)	70140.01
2	lower profile	70140.00
3	rolls group with supports	70140.03
4	lower rubber profile	7007
5	middle rubber	7023
6	shutter profile	7024
7	right sliding plate	7010
8	left sliding plate	7025
9	side guide	7003
10	sealing rubber	7026
11	cover	7027
12	wheel group	7104
13	left fixing plate	7028
14	right fixing plate	7029
15	motor	70183
16	roll support with bearing	70018





1. Place the guides
2. Fix the profile of the little cover
3. Position the plates with the wheels and the roll holders (already mounted) in reference to the guides (see plan)
4. Fix the plates
5. Cut the roll accordingly
6. Insert the roll into the holders in the correct position, like shown in the plan and on the roll
7. Remove the guides
8. Insert the shutter into the opening from the front side (the shutter looks like shown in the spare parts plan)
9. Mount again the guides and fit them definitively
10. Fit the belts on the preset roll
11. Regulate the opening end-switch
12. Regulate the closing end-switch
13. Lubricate the sliding guides

Please note: The supplied cover can be replaced by a built-in frame.



1. Mount the lower profile (shorten or shape if necessary)
2. Mount the end-switches plates onto the upper and lower guide (right guide for the RH motors and left guide for the LH motors)
3. Locate the guides (shorten them if necessary)
4. Mount pin and wheel onto the roll holding plate /choose the more suitable position among the prearranged holes onto plate)
5. Mount the plate with pin and wheel, with reference to the guide (see plan)
6. Mount pin and wheel onto the motor plate (choose the more suitable position among the prearranged holes onto the plate)
7. Mount the emergency handle for motor release (complete with cable and sheath) in one of the 3 positions set on the motor after adapting the cable length, which depends on the position chosen for the emergency handle
8. Locate and fix the motor with pin and wheel mounted, taking the guides as a reference (see plan)
9. Shorten the roll and put the cap with hexagonal pin
10. Secure the support for the square pin of the roll to the plate in line with hexagonal axis on the motor
11. Locate the winding toll in the correct position
12. Remove the guides
13. Locate the shutter into the vehicle opening from the front (the shutter will look like in the spare parts table)
14. Fix the guides permanently
15. Fix the belts onto the pre-loaded winding roll
16. Perform the motor release operation by using the related emergency handle
17. See the instructions on the winding roll. **PAY ATTENTION** the winding roll comes pre-loaded. Remove the safety pin from the roll, rotate it manually towards the loading direction and release it. Now the shutter winds onto the roll
18. Mount the gutter profile
19. Duly lubricate the sliding guides
20. Locate the squashing end-switch plate onto the shutter closing profile – LH or RH side (depending on the position of the motor)

For the electrical connections please follow the electrical table supplied

WARNING: PRE-LOADED WRAPPED ROLL

For mounting the roller correctly, connect it in the proper support, fitting on the opposite side the cap with hexagonal pin coupling to the engine and in the correct position as indicated on the label.

THE BLACK STRIPE ON THE PAPER must be positioned on the wrapping roll:

- RH head side of roll in case of LEFT motorization
- LH head side of roll in case of RIGHT motorization

POINT OUT THE POSITION OF SAFETY PLUG

Set the roller with the safety pin (wrapped by protective paper) so it comes out under the roll, releasing the roll from the paper. The pin comes out from the roll itself.

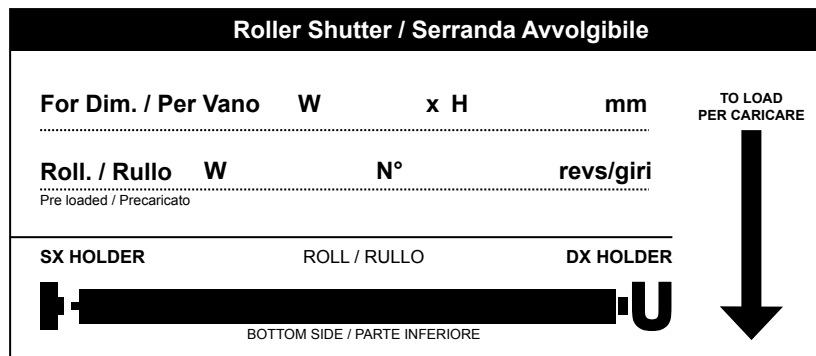
Loosen the engine with proper handle

Manually rotate the roller in the charging direction and release it immediately.

The roller loader will wrap the straps recalling the roller shutter

DO NOT CLEAR THE ROLL FROM THE SAFETY PIN BEFORE HAVING FULLY FITTED THE ROLLER SHUTTER AND HAVING RELEASED THE ENGINE.

In case of download of winding roll before have completed the mounting process, recharge following the direction of charging and the strokes number always indicated on the roller itself; lock reinserting the safety pin. Repeat again the previous operations.



MEASURING

MEASUREMENTS	
H tot	Total height
H int	Internal height
L	Sliding room
C	Light height
WU	Light width
WS	Total width
D	Guide and gasket edge

